

A standard cruise in the aqua metropolis Osaka



Aqualiner

OSAKA URBAN CRUISE



A standard cruise in the aqua metropolis Osaka,
around the Osaka Castle and Nakanoshima Island

The tour departs from "Osaka Castle Pier" in the Osaka Castle Park, and makes a brief stop at "Hachikenya-Hama Pier", cruises along the Okawa River (former Yodo River) and Nakanoshima area. From the boat, which glides along the surface of the river, you can find the seasonal sceneries and famous landmarks and historic sites of Osaka. Please enjoy the scenery of the water city Osaka while sensing the breathing of the people who live in the city.

Boarding fares *Prices changing during the special spring season (3/25 - 4/10).

Round-trip route / about 55 min.

Adult: **2,000** yen / Child (elementary school students): **1,000** yen

One way course / about 25 min.

Adult: **1,500** yen / Child (elementary school students): **750** yen

Boarding point • Departure Time

【Osaka Castle Pier】 On the hour, every hour between 10:00-16:00

*From 11 Apr to 31 Aug 2025, a 17:00 departure will also operate.

【Hachikenya-Hama Pier】 It departs every one hour between 10:30-16:30

*The 16:30 service is only available as a one-way course to Osaka Castle Pier.

no-service day

7/25 p.m., 1/14 - 15, 2/4 - 5, 2026.

Other temporary closing dates

The operation differs from 25 Mar to 10 Apr due to the special spring period. Please check the website for the latest information before using the service.

Please check the website
for the latest information →

Osaka Aqua Bus



For reservations
and inquiries

Osaka Aqua Bus reservations center [Opening Hours] 9:15 ~ 17:00
◆We accept reservations 2 months prior to the scheduled reservation date (3 months for groups).

+81-6-6942-5511

*The information is current as of February 2025. Please check the website for the latest information. Apr 2025 - Mar 2026.



Osaka Castle



Central Public Hall

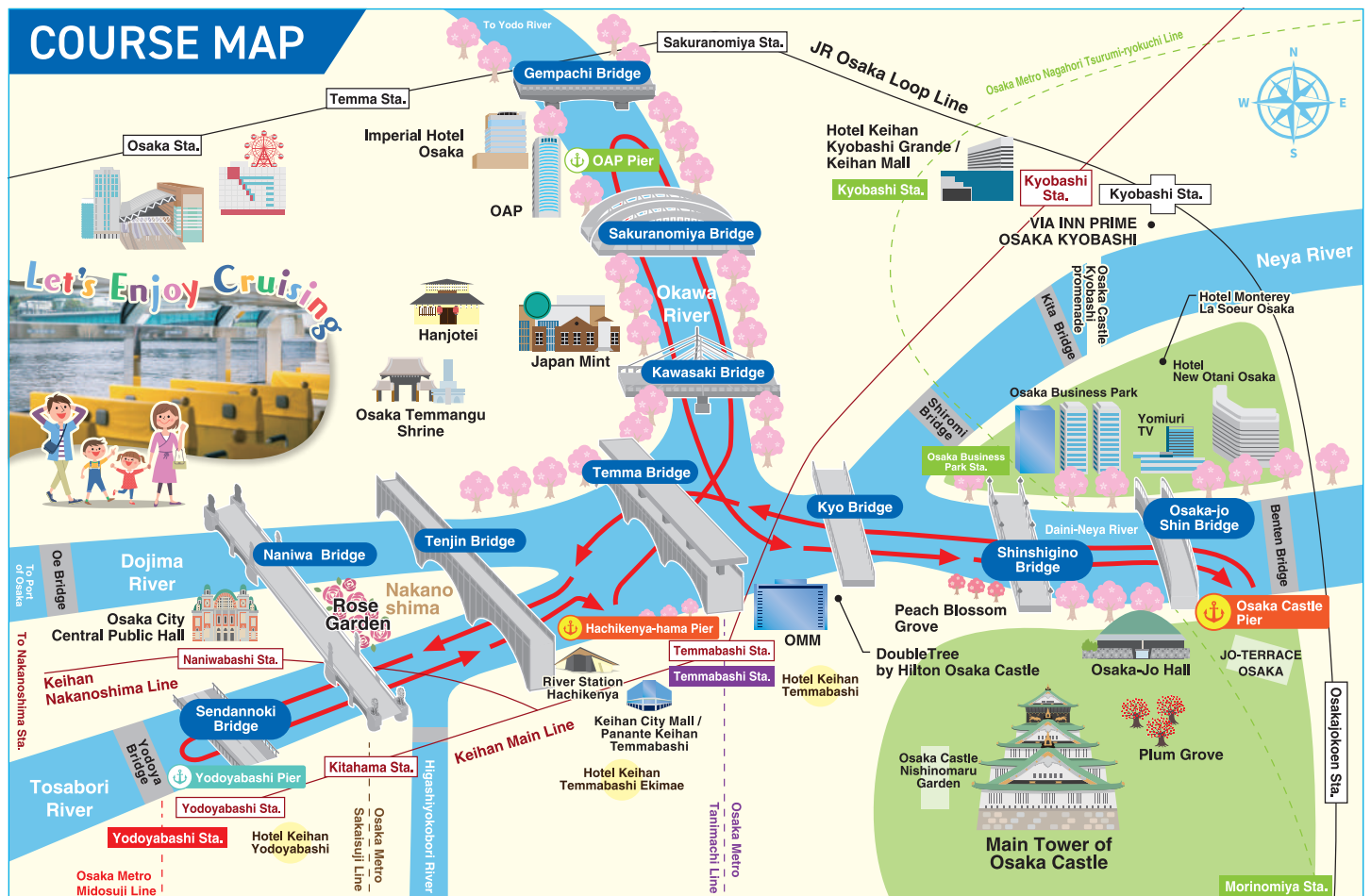


Nakanoshima Rose Garden



OSAKA URBAN CRUISE

Explore in Osaka from the river surface. A cruise that takes you to the famous landmarks and historic sites of Osaka, the city of water. From the ship, visitors can enjoy a number of bridges and seasonal scenery. Beer, soft drinks, snacks, and ice cream are also available on board.



The tour may be suspended or the course may be changed for safety reasons due to weather or river conditions. The cruise contents may be subject to change due to event cruise operations or other circumstances.

Supported by

アサヒビール株式会社